

Ready for the future,
caring for the customer



Ultrasonic Inspection
Technologies

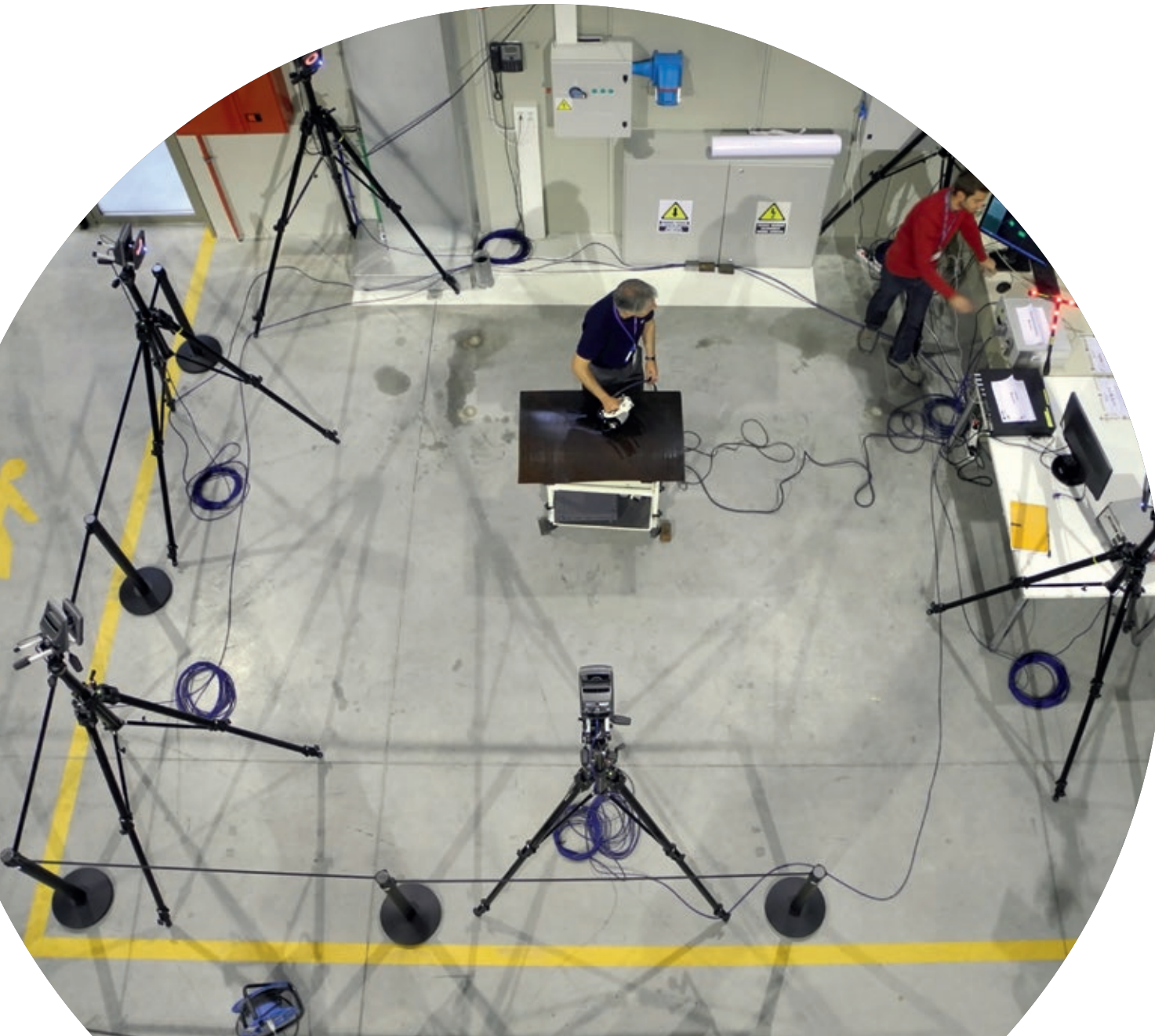
WiiPA[®]

Wireless Positioning
Inspection System

 **tecnatom**

www.tecnatom-ndt.com

CE



APPLICATION

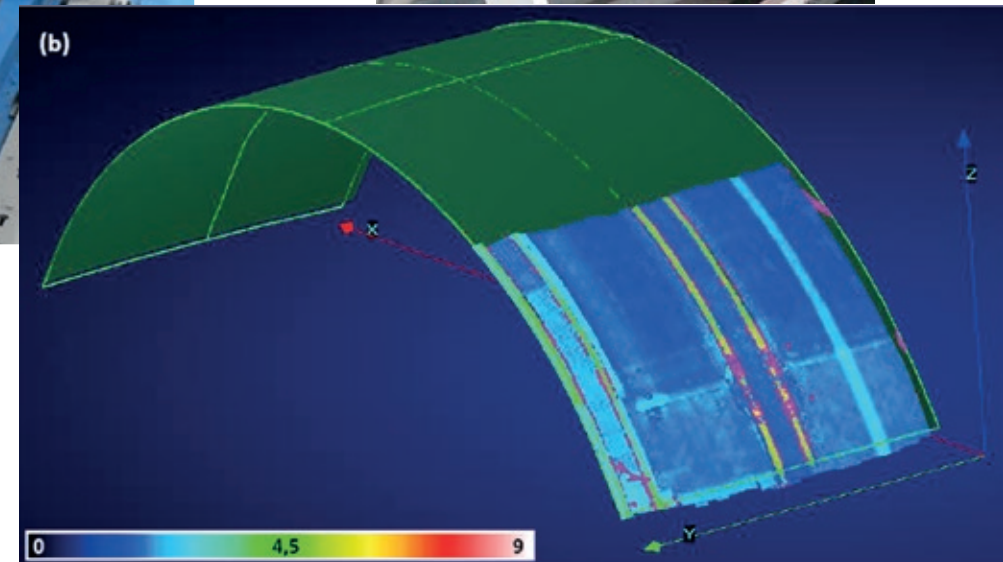
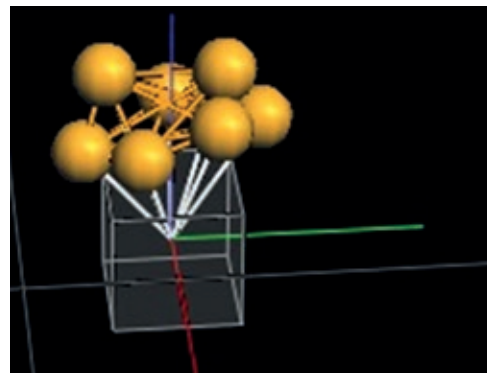
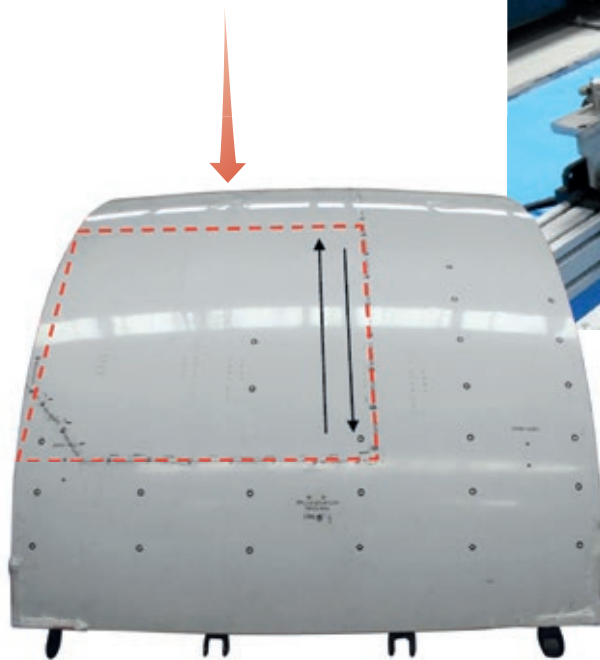
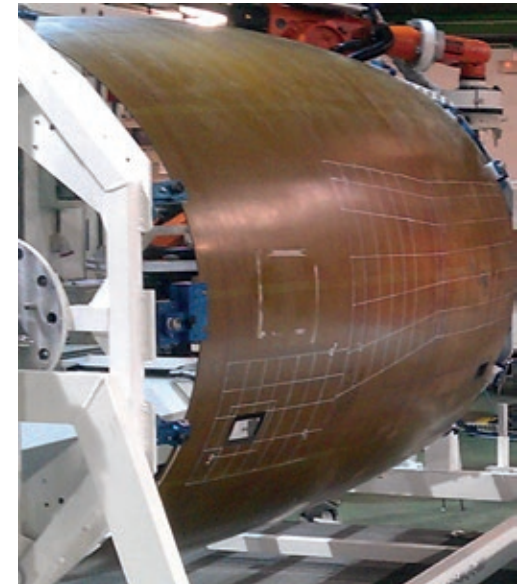
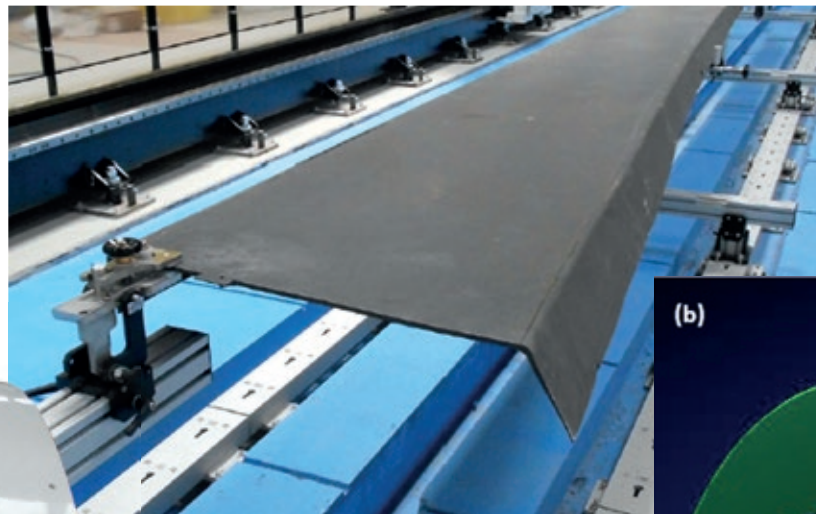
Manual inspection process at factory or service.
The system emulates a six axes machine for multiple geometries and pieces dimensions.
It is based on motion capture using IR cameras and markers for tracking the inspection probes.

Proven Advantages

- Multidisciplinary, there is no restriction between kinds of probes (UT/ET).
- Trackable, using wireless motion probe capture.
- Adaptable, useful for multiple dimensions and geometries.
- Fast, manual inspection easily installable.
- High repeatability and accuracy.
- Easily configurable cell inspection.
- Parallel inspections with different operators inside inspection volume.

System Characteristics

- The system provides the position and spatial orientation of multiple probes.
- Useful for manual inspections of sensitive areas in which is required a registry of the position quickly and effectively.
- Probe position detectable by IR cameras that determine the position of probe with great accuracy and cadence.
- Quick calibration and reference method.
- The process is similar as "paint".
- Reinspection possibility for not covered areas at real time.

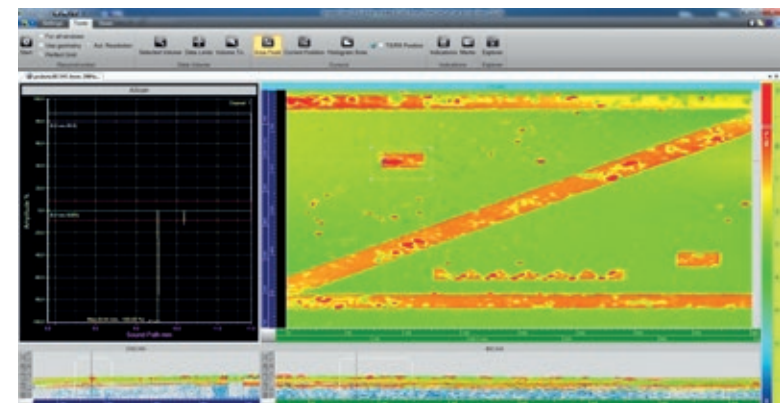
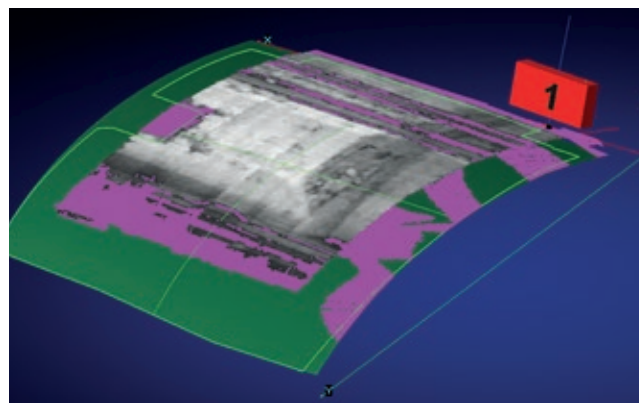




FEATURES

Inspection type	UT / ET / Visual
Material type	All types and geometries
Inspection Velocity	50-200mm/s
Axes	Emulating 6 axes machine XYZ ABC
Precision	0.1mm / 0.1deg
Signal Fqcy	400KHz

Very workable system for aeronautical inspections.
The existing design may be easily adapted to the
specific piece dimensions.



 **tecnatom**

Tecnatom, S.A.
Av. Montes de Oca, 1
28703, San Sebastián de los Reyes / Madrid- Spain

www.tecnatom-ndt.com

